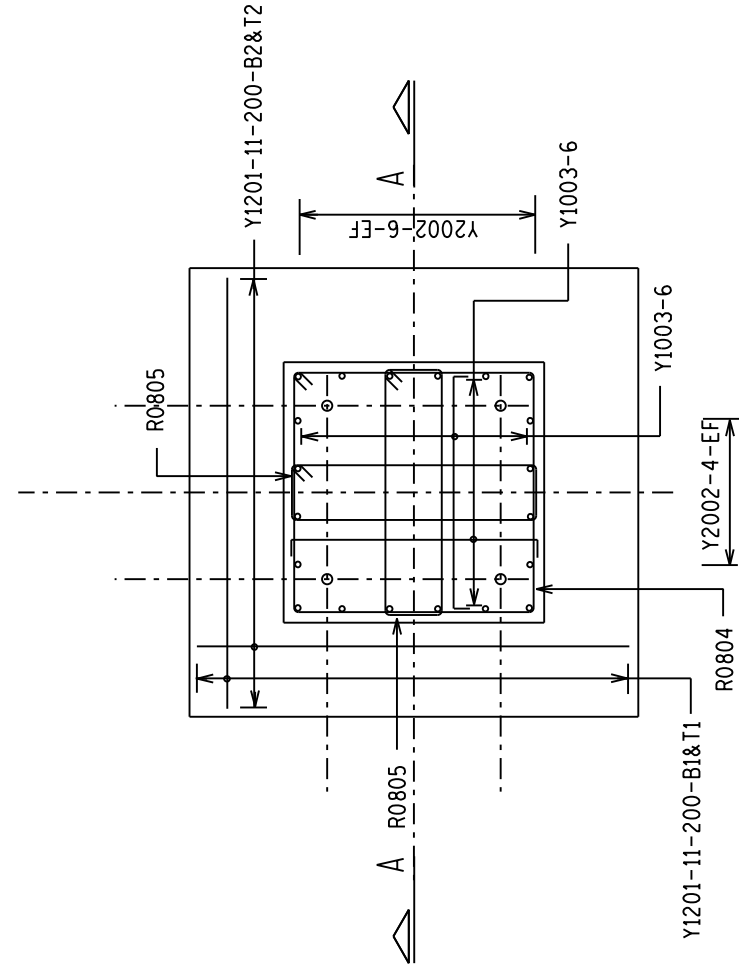
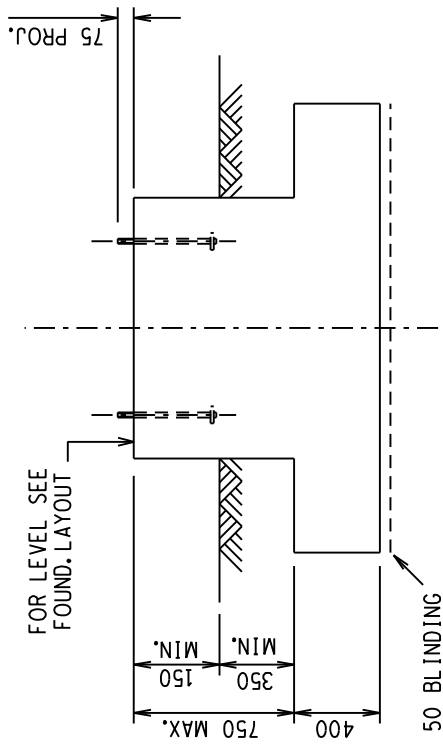


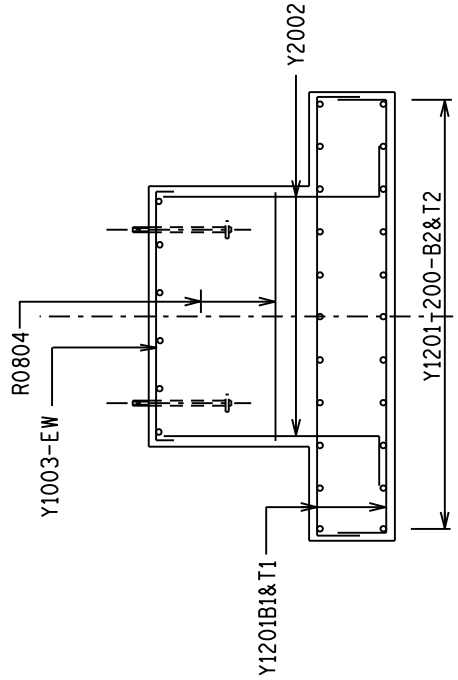
PLAN



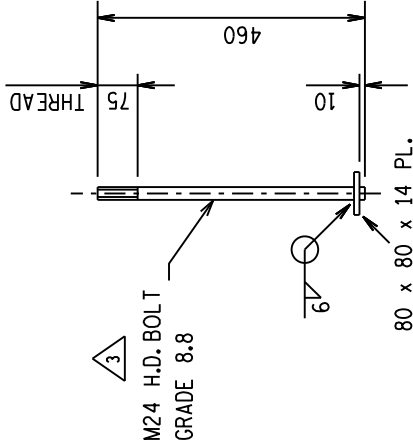
PLAN



ELEVATION



SECTION A-A



MASS OF ONE BOLT COMPLETE WITH
NUT AND WASHER = 2,5 kg
TOTAL MASS = 10 kg

H.D. BOLT DETAIL (4 OFF) N.T.S.

ITEM AND No OFF	Y OF R	MK.	BARS		SHAPE CODE	STANDARD SHAPES BENDING DIMENSIONS mm		
			No OFF	PER TOTAL				
			PER ITEM	PER TOTAL				
BASE. 1 OFF.	Y 12	01	44	44	38	260	2000	
	Y 20	02	20	20	37	A	-	
	Y 10	03	12	12	35	1100	-	
	R 08	04	C	C	60	1120	1120	
	R 08	05	D	D	60	1120	260	

$A = (\text{LENGTH PLINTH} - 50) + 320$
 $B = A + 530$
 $C = (\frac{A}{300}) + 1$
 $D = (\frac{A}{300}) + 1 \times 2$

NOTES

- 1.) CONCRETE STRENGTH AT 28 DAYS/STONE SIZE : BLINDING = 15/19
FOUNDATION = 25/19
CONCRETE CASTED IN FOUNDATION:
SLUMP VALUE 75mm (TOLERANCE $\pm 25\text{mm}$)
- 2.) MIN. COVER TO REINFORCEMENT TO BE 50mm
- 3 a.) HD BOLTS (GRADE 8.8) SUPPLIED BY CIVIL CONTRACTOR COMPLETE
WITH NUTS & WASHERS TO BE HOT DIPPED GALVANISED TO SANS 121
b.) THREAD TO BE OVER-CUT TO SANS 121 TO ALLOW FOR THICKNESS
OF GALVANISING
- 4.) FORMWORK TO EXTEND AT LEAST 150mm BELOW GROUND LEVEL
- 5.) ALL WELDING AND WELDING SYMBOLS TO SANS 10044
- 6.) STEEL TEMPLATE TO BE USED FOR SETTING OUT OF HD BOLTS
- 7.) 30 MPa FLOWABLE NON-SHRINK GROUT UNDER BASE PLATES ONLY
IF REQUIRED
- 8.) ALL TOP EDGES TO HAVE 20 x 20 CHAMFER
- 9.) ALL WORK TO BE IN ACCORDANCE WITH SANS 1200 SERIES OF SPECIFICATIONS
- 10.) CONCRETE FINISH : TOP OF FOUNDATION - WOOD FLOAT FINISH
SIDES OF FOUNDATION - SMOOTH OFF SHUTTER FINISH
- 11.) THESE FOUNDATIONS HAVE BEEN DESIGNED TO FOUND ON COMPETENT
FOUNDING MATERIAL. IN ALL CASES COMPETENCY OF FOUNDING MATERIAL
MUST BE ESTABLISHED BY A QUALIFIED GEO-TECHNICAL ENGINEER

3	D.J.C.S	31/5/16	HD BOLTS AND NOTES REVISED	PHD	DB.N.
2	D.J.C.S	20/2/03	BAR MK. 01 CHANGED-SCHEDULE	D.J.C.S	DB.N.
1	D.J.C.S	3/99	REINFORCEMENT AND NOTES REVISED	D.J.C.S	DB.N.
0			FIRST ISSUE / EERSTE UITREIKING		
REV	AUTH MAC	DATE DATUM	REVISION/REVISTES INDEX REF / INDEKSVERW	BY DEUR	CHD NAGES
DRG. TEK REGISTR			F159		

THIS DRAWING HAS BEEN CREATED ON A C.A.D. SYSTEM AND ANY AMENDMENT TO THE DRAWING MUST BE EFFECTED ONLY ON THE SAME C.A.D. SYSTEM		APPROVED M van den Ende		GOEDGEKEUR		LARGE EQUIPMENT SUPPORT PAD TYPE FOUNDATION DETAIL		REV	
PLOT=500:1		11/8/93		93/08/12		0.54/4368		3	
SCALE SKAAL		1:25		10		11		12	
								SIZE GROOTTE	
								A2L	